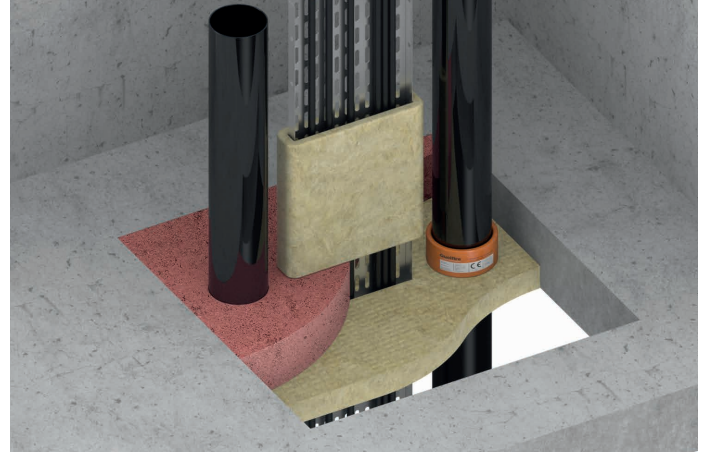


Quelfire MW Mineral Wool Shuttering Slab provides a simple means of shuttering to Quelfire Fire Protection Compounds.



MW Mineral Wool Shuttering Slab



MW Mineral Wool Shuttering Slab used in conjunction QF2 Fire Protection Compound

FEATURES & BENEFITS

- 🔧 An easy to install shuttering system for the fire protection compounds
- 📏 1200 x 600 x 50mm slabs

COMPOSITION

Quelfire MW Mineral Wool Shuttering Slab consists of a non-combustible mineral wool batt which will provide increased fire resistance when used correctly. It is easy to cut facilitating installation around services and is used as a fire resistant permanent shuttering to all types of fire protection mortar.

REGULATIONS

Building Regulations impose limitations on all services passing through fire compartment walls and floors. Quelfire MW Mineral Wool Shuttering Slab together with Quelfire QF2 Fire Protection Compound has been tested in accordance with the General Principles in BS 476: Part 20: 1987 in conjunction with the additional guide lines in the latest available draft document reference EN 1366-3: 1993 produced by the European Committee for Standardisation (CEN) relating to the fire resistance testing of penetration sealing systems.

DURABILITY

Quelfire MW Mineral Wool Shuttering Slab is expected to last the lifetime of the service installation.

APPLICATION / INSTALLATION

Under fire conditions the Quelfire MW Mineral Wool Shuttering Slab installed with the QF2 Fire Protection Compound maintains fire integrity for up to 4 hours where cables, and other non-combustible services penetrate fire walls or floors.

Quelfire QF2 may be used in all types of buildings and is compatible with most building materials. QF2 is simply added to clean water either in a bucket or a concrete mixer, mixed and poured or trowelled into position.

The setting time for Quelfire QF2 depends on the atmospheric temperature. It may be built up further within two or three hours where large barriers are required. Do not attempt to use a mix ratio of less than 2:1 mortar to water volume.

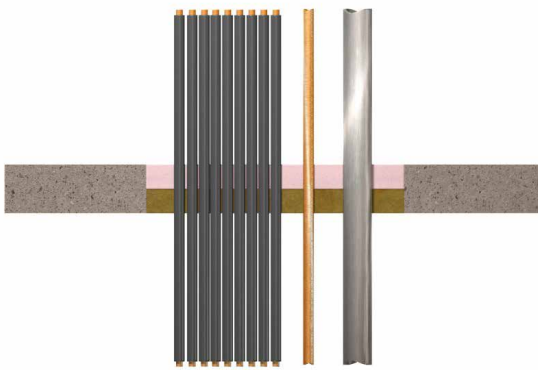
Adding further water to the partially cured system must be avoided at all times as this will irreversibly interfere with the curing process.

For horizontal barriers it is recommended that Quelfire MW Mineral Wool slabs are tightly fitted into the opening so that the Quelfire QF2 mortar may be poured on top of the slab to the required thickness. It is recommended that the mineral wool slab is not removed but remains in position as this offers an enhanced period of fire resistance.

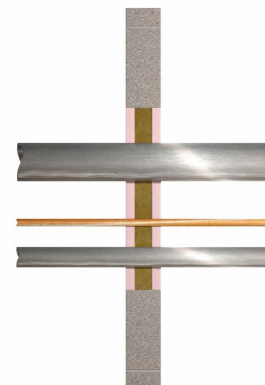
Where the barrier is required to provide a load bearing capability, consideration should be given to structural support, such as reinforcing bars. Consideration may also be given to the use of a permanent shuttering system. In all loadbearing situations mortar thickness must be at least 100mm.

Where the thickness of the seal is built up using multi layers, the structural strength of the seal may be reduced. It is therefore recommended, particularly in load bearing situations, that a maximum of 10% thickness is installed initially and the remaining thickness applied as a further single operation.

For vertical or wall barriers, it is recommended that Quelfire MW Mineral Wool slab is installed as a tight fit into the aperture at the centre line of the fire compartment wall. Quelfire QF2 may then be 'plastered' to a minimum thickness of 25mm to each side of the slab.



Floor cross section of MW Mineral Wool Shuttering Slab used in conjunction with QF2 Fire Protection Compound



Wall cross section of MW Mineral Wool Shuttering Slab used in conjunction with QF2 Fire Protection Compound

TECHNICAL SUPPORT & GUIDANCE

Should you require any further information regarding this product, please don't hesitate to contact Quelfire Ltd.

WARRANTY The Company warrants its products to be free from defects in material and workmanship for a period of 12 months from the date of delivery. The Company's obligation under this warranty is limited, as its option, to the repair or replacement, free of charge, or refund of the net Invoiced price of any part found to be defective, and which, in the Company's opinion, has not been subject to undue wear and tear, accident, alteration, abuse or misuse. Consequent damages are expressly disclaimed. Technical advice from Quelfire whether verbal, in writing or by way of trials, is given in good faith but without warranty. The application, use and installation of the Company's products are beyond the control of the Company, and the purchaser is solely responsible that goods are fit for any particular purpose. In line with the Company's policy of continual research and development, product specifications and availability are subject to change or withdrawal without prior notice.

Quelfire maintain a policy of constant improvement and reserve the right to alter or amend the specifications of their products without notice. Quelfire is a Registered Trademark.